

2-STORY

45' LOT | DETACHED



## OVERVIEW

This expansive 2-storey home spans a generous 2,868 sq ft, offering an abundance of space for comfortable living. With 4 – bedrooms and 3.5 bathrooms, this home is perfectly designed for families. An open concept main floor provides a spacious living, dining and kitchen ensuring maximum functionality. The upper floor features private bedrooms, a large primary bedroom, walk-in closet and large ensuite. The 2-car garage ensures parking and storage for the large family. The Rockwall is an easy choice for any large or growing family.

# ROCKWALL

Lot #28, 35 Winery Way

\$1,250,000



4 Beds



3 ½ Baths



2,868 sq ft



2 Car Garage





Rockwall | 45' Lot

# FLOORPLANS

All locations are to be approximate and may be impacted by joist locations, HVAC, plumbing etc.  
The builder has the right to move locations slightly in order to accommodate house design.

Ontario Building code supersedes anything on this drawing.

All material, specifications and floor plans are subject to change without notice. House renderings are artists' conception and may be built as a mirror image. All floor plans are approximate dimensions.

Actual usable floor space may vary from the stated floor area. Colour representations are approximate and subject to change. Municipal Architectural Controls may require modification to exterior material used, exterior house design, appearance and colours.

Legend

LB

Light Bulb

LF

Light Fixture

CL

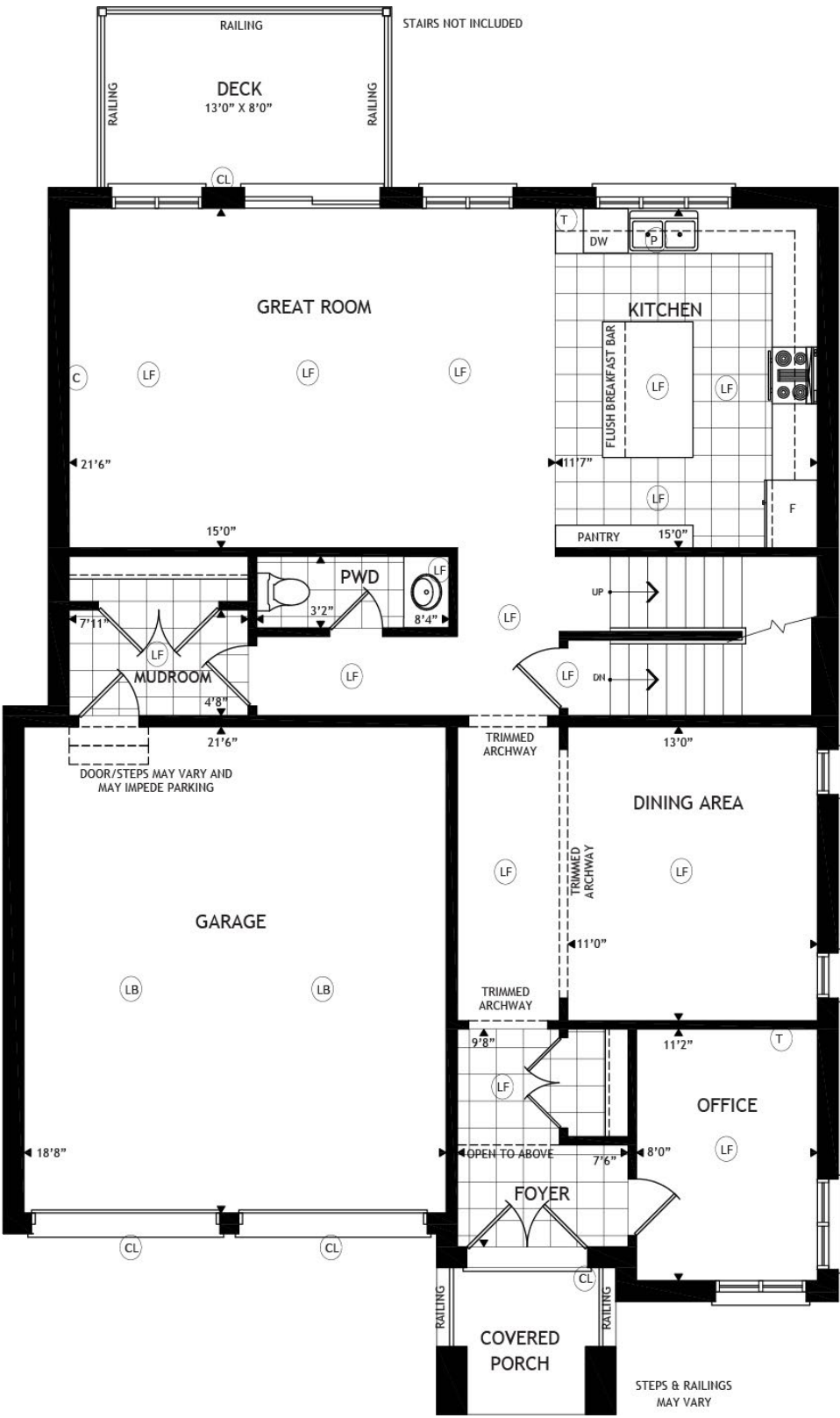
Coach Light

T

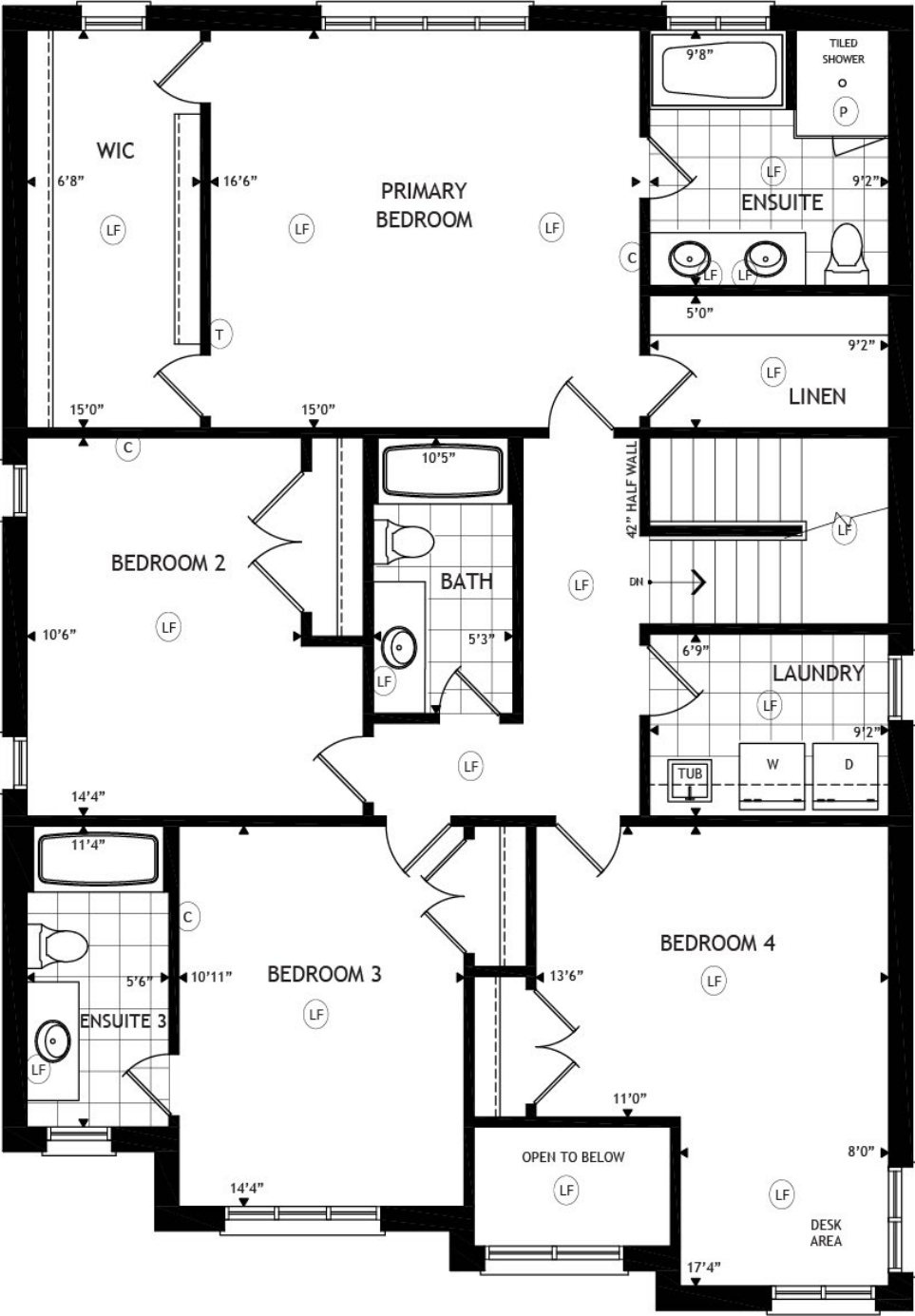
Telephone

C

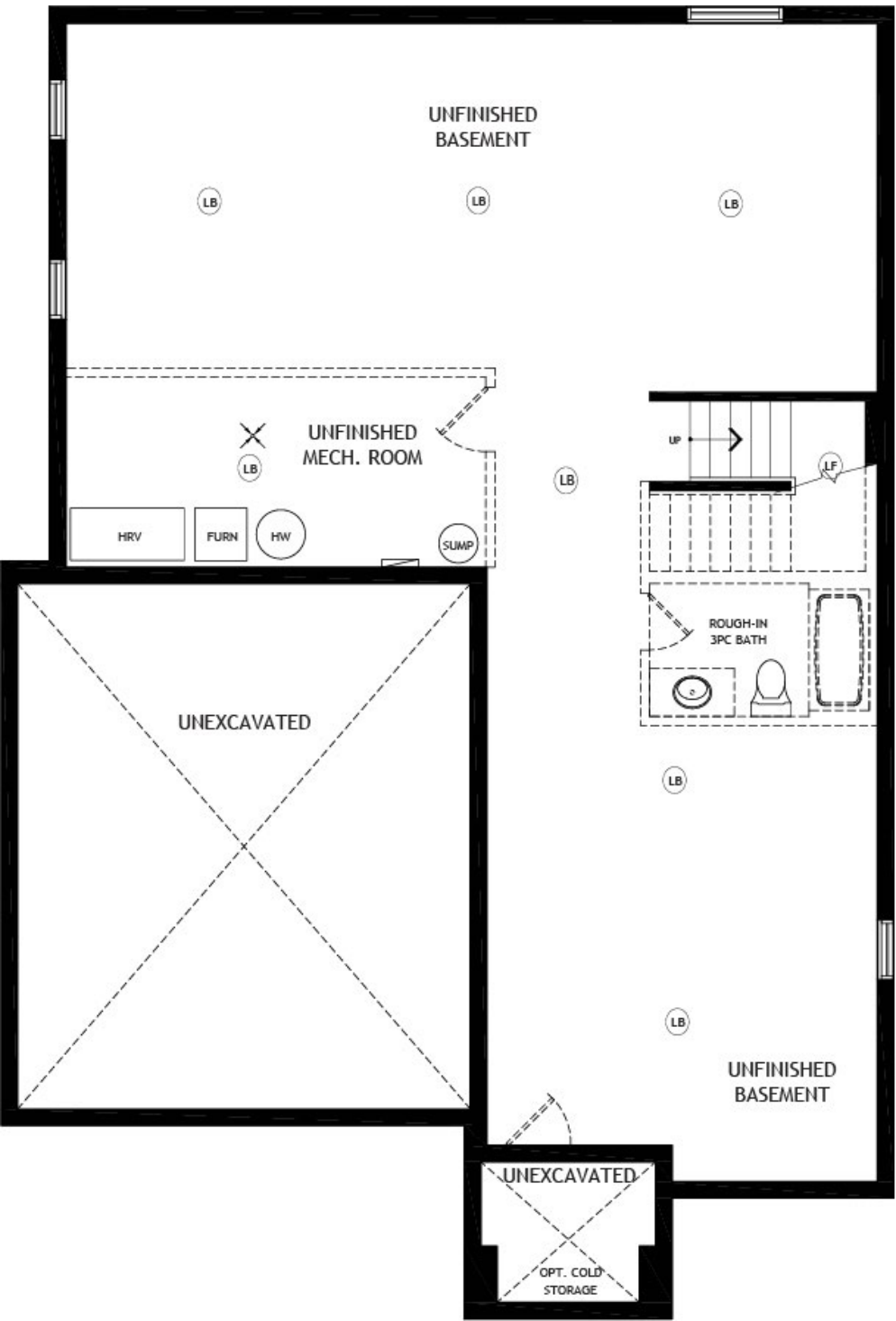
Cable



Main Floor



Second Floor



Basement



# YOUR DREAM HOME IS WAITING

Connect with a sales consultant to schedule a visit or find out more about how we can help.



## Contact Us

### SALES OFFICE + MODELS

15 Lally Terrace  
Barrie, Ontario

[sales@bradleyhomes.ca](mailto:sales@bradleyhomes.ca)

1-866-404-6142

### HEAD OFFICE + DESIGN STUDIO

111 Bradford Street,  
Barrie, ON L4N 3A9

[designstudio@bradleyhomes.ca](mailto:designstudio@bradleyhomes.ca)

