

EXTERIOR UNIT


20' LOT | TOWNHOME



BIRCH

From
\$727,000

 3 Beds

 2 1/2 Baths

 1,468 sq ft

 1 garage

ELEVATIONS





Birch | 20' Lot

FLOORPLANS

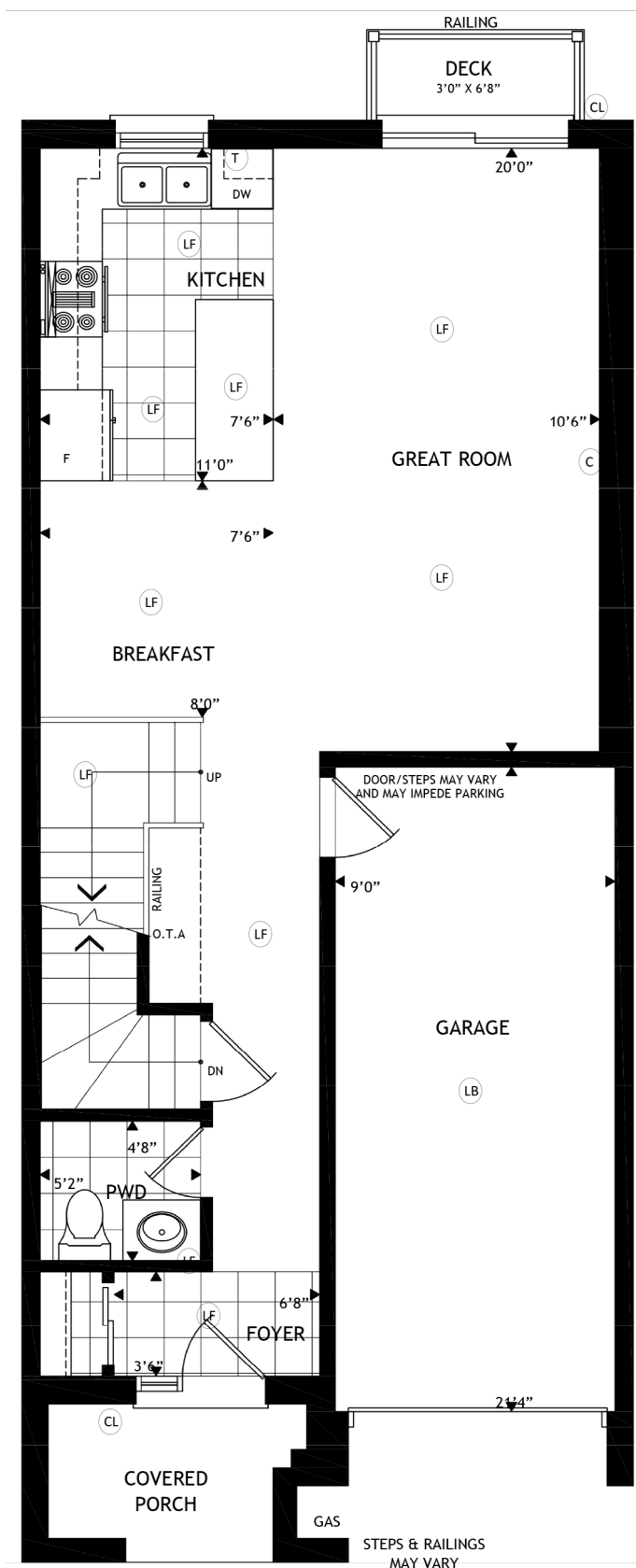
- Legend**
- Ⓛⓑ Light Bulb
 - Ⓛⓕ Light Fixture
 - ⓐⓁ Coach Light
 - Ⓣ Telephone
 - ⓐ Cable

All locations are to be approximate and may be impacted by joist locations, HVAC, plumbing etc. The builder has the right to move locations slightly in order to accommodate house design.

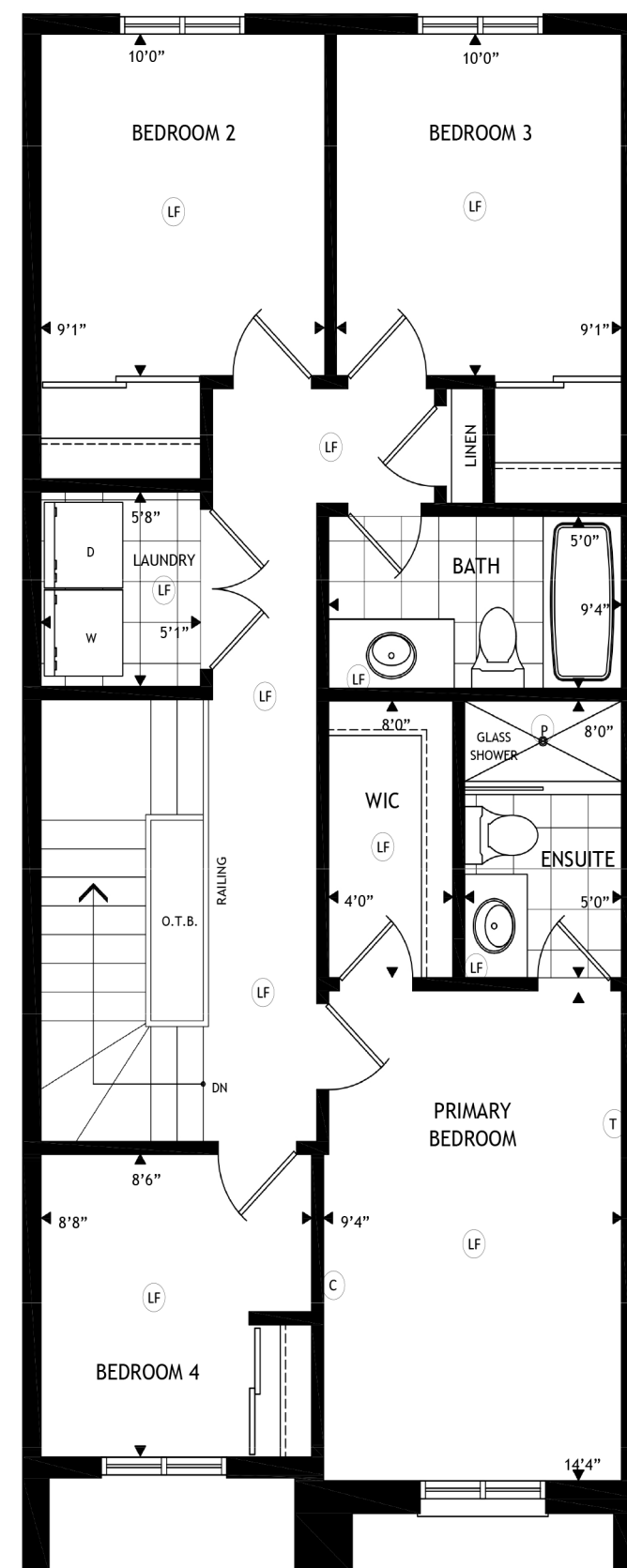
Ontario Building code supersedes anything on this drawing.

All material, specifications and floor plans are subject to change without notice. House renderings are artists' conception and may be built as a mirror image. All floor plans are approximate dimensions.

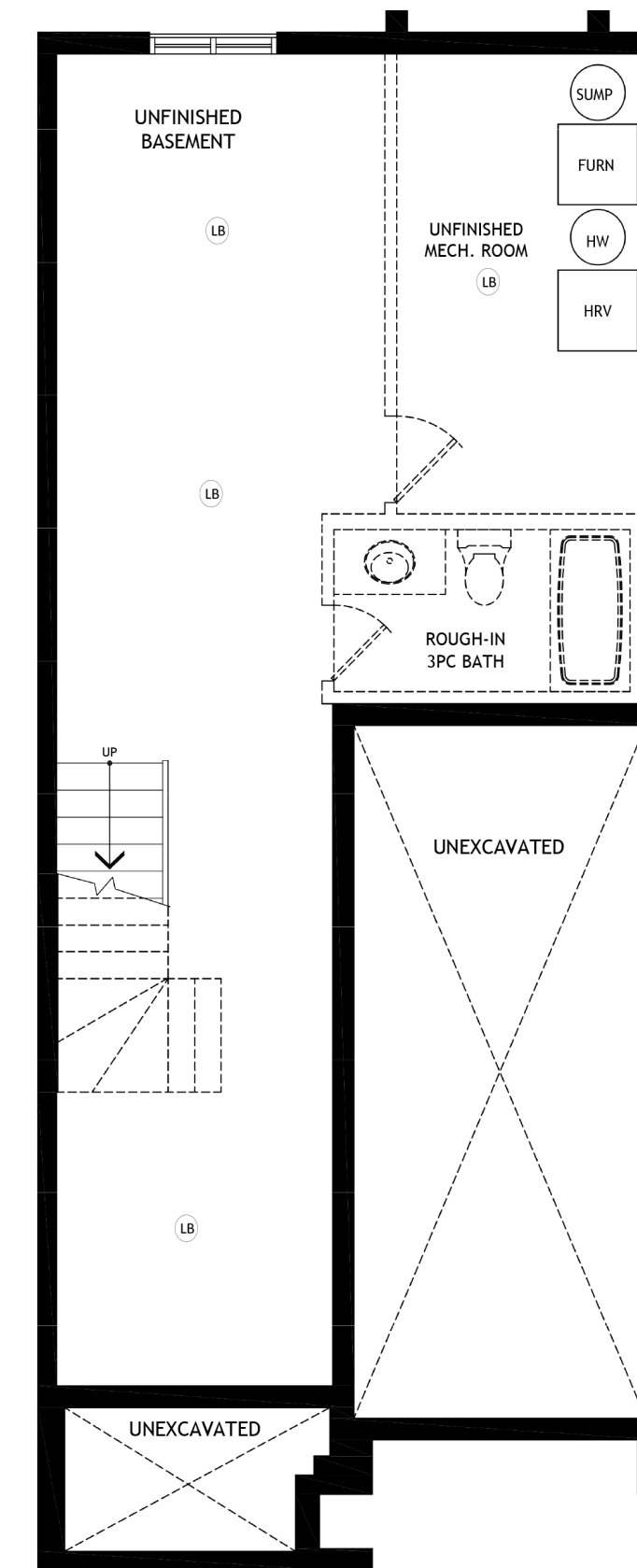
Actual usable floor space may vary from the stated floor area. Colour representations are approximate and subject to change. Municipal Architectural Controls may require modification to exterior material used, exterior house design, appearance and colours.



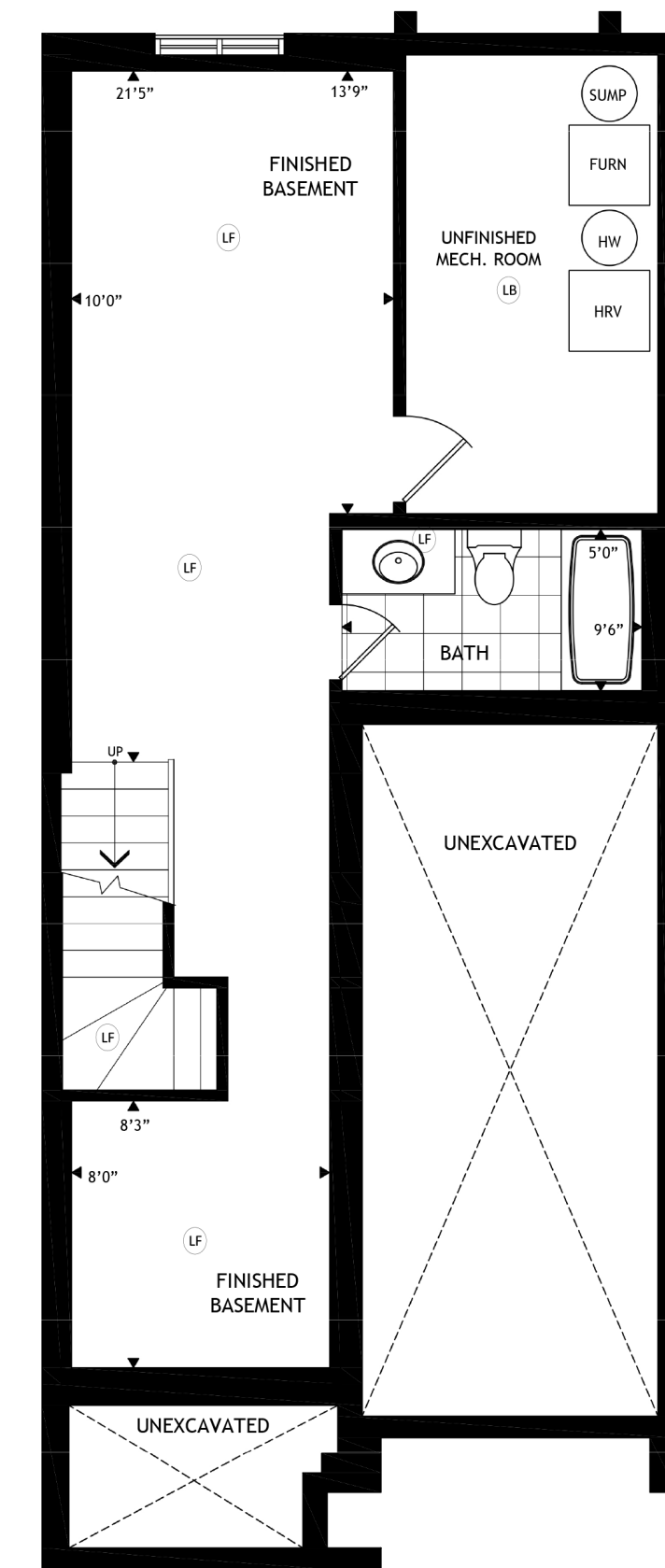
Main Floor



Second Floor



Basement



OPTIONAL Finished Basement