

2-STORY

36' LOT | DETACHED





QUICK CLOSE

RIVERBANK

Lot #52, 16 Ranch Terrace

\$1,040,000

 4 Beds

 3 1/2 Baths

 2,476 sq ft

 2 Car Garage

OVERVIEW

This impressive 2-storey home spans 2,476 sq ft, offering plenty of room for the growing or large family. With 4 bedrooms and 3.5 bathrooms it ensures convenience and privacy. The double-car garage provides secure parking and storage. Second floor features a primary bedroom with stand-up shower they/their walk-in-closets, second floor laundry and 3 bedrooms to accommodate family and guests. The main floor seamlessly integrates function with modern convenience. With open concept kitchen, dining, and great rooms with a private home office, this could be the place you call home.

Includes \$ 104,000 in upgrades.



Riverbank | 36' Lot

FLOORPLANS

All locations are to be approximate and may be impacted by joist locations, HVAC, plumbing etc. The builder has the right to move locations slightly in order to accommodate house design.

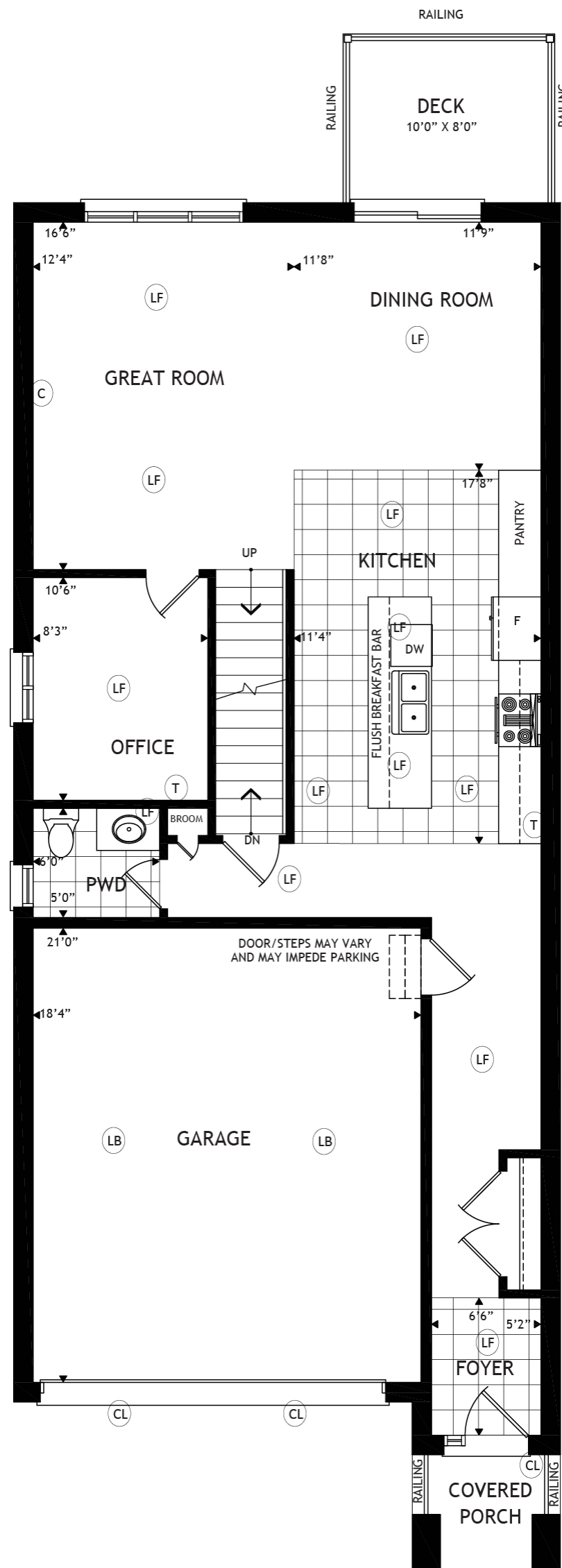
Ontario Building code supersedes anything on this drawing.

All material, specifications and floor plans are subject to change without notice. House renderings are artists' conception and may be built as a mirror image. All floor plans are approximate dimensions.

Actual usable floor space may vary from the stated floor area. Colour representations are approximate and subject to change. Municipal Architectural Controls may require modification to exterior material used, exterior house design, appearance and colours.

Legend

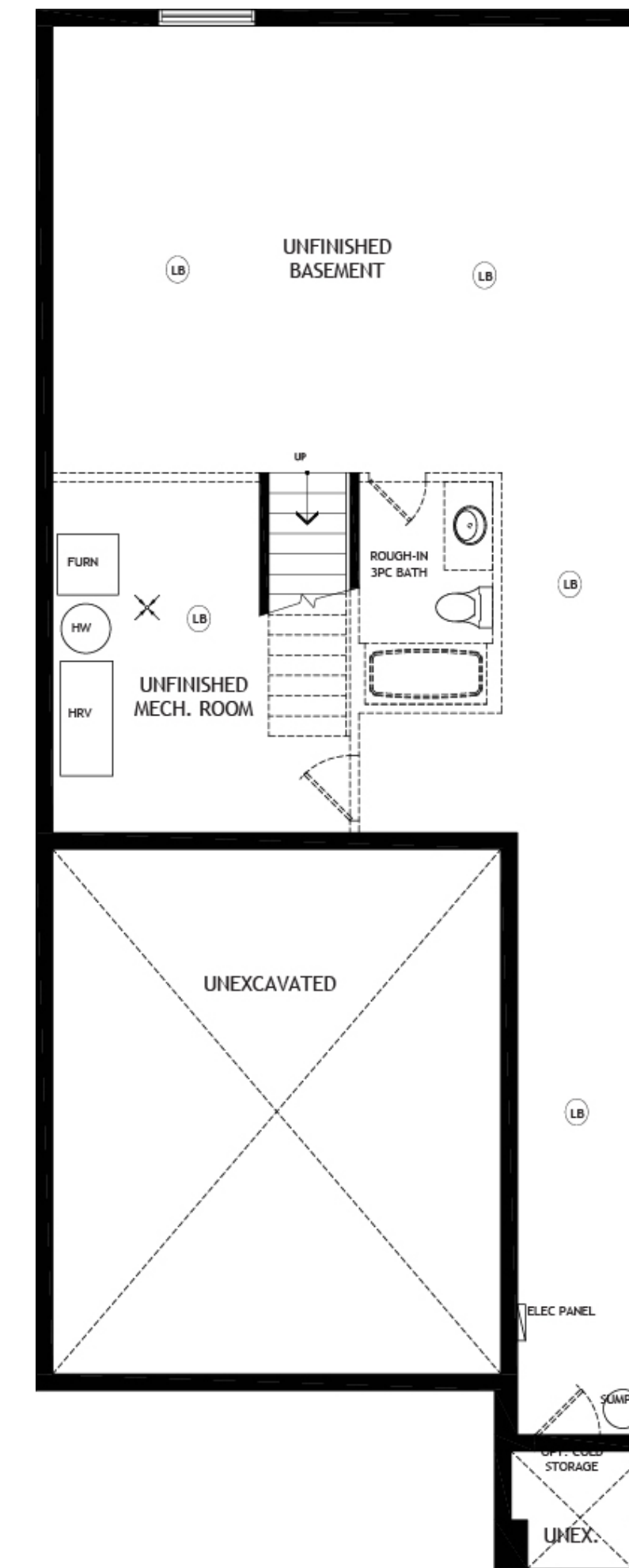
- LB Light Bulb
- LF Light Fixture
- CL Coach Light
- T Telephone
- C Cable



Main Floor



Second Floor



Basement

YOUR DREAM HOME IS WAITING

Connect with a sales consultant to schedule a visit or find out more about how we can help.



Contact Us

SALES OFFICE + MODELS

15 Lally Terrace
Barrie, Ontario

sales@bradleyhomes.ca

1-866-404-6142

HEAD OFFICE + DESIGN STUDIO

111 Bradford Street,
Barrie, ON L4N 3A9

designstudio@bradleyhomes.ca

