

2-STORY

36' LOT | DETACHED




**QUICK CLOSE**


Lot #38, 25 Ranch Terrace

**\$1,020,000**

# BROOKSIDE

 4 Beds

 3 1/2 Baths

 2,295 sq ft

 2 Car Garage

## OVERVIEW

This large 2-storey home boasts 2,295 sq ft of living space, making it ideal for families seeking room to enjoy. With 4 bedrooms and 3.5 bathrooms this home ensures everyone has their own space. Perfectly balanced, sits the second-floor bedrooms with an open concept main floor, which hosts, a large great room, dining room, pantry, kitchen, and kitchen island connecting everyone in one functional plan.

**Includes \$ 103,000 in upgrades.**





# Brookside | 36' Lot FLOORPLANS

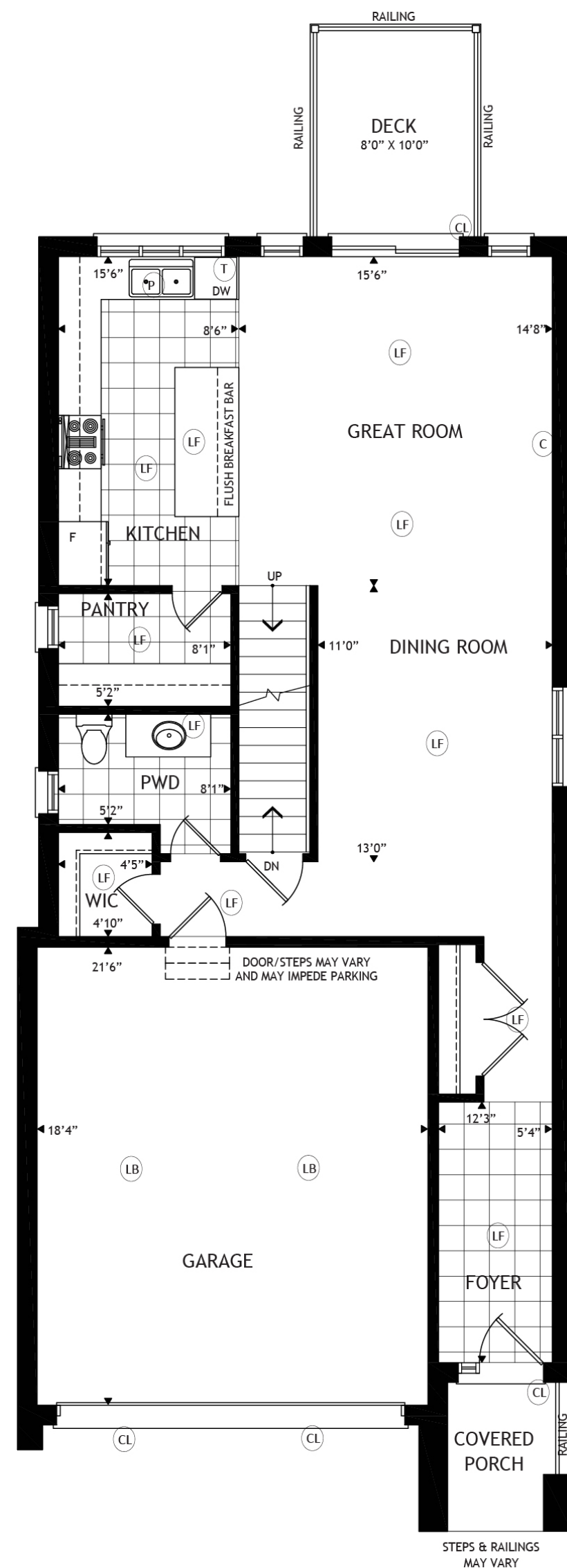
All locations are to be approximate and may be impacted by joist locations, HVAC, plumbing etc. The builder has the right to move locations slightly in order to accommodate house design.

Ontario Building code supersedes anything on this drawing.

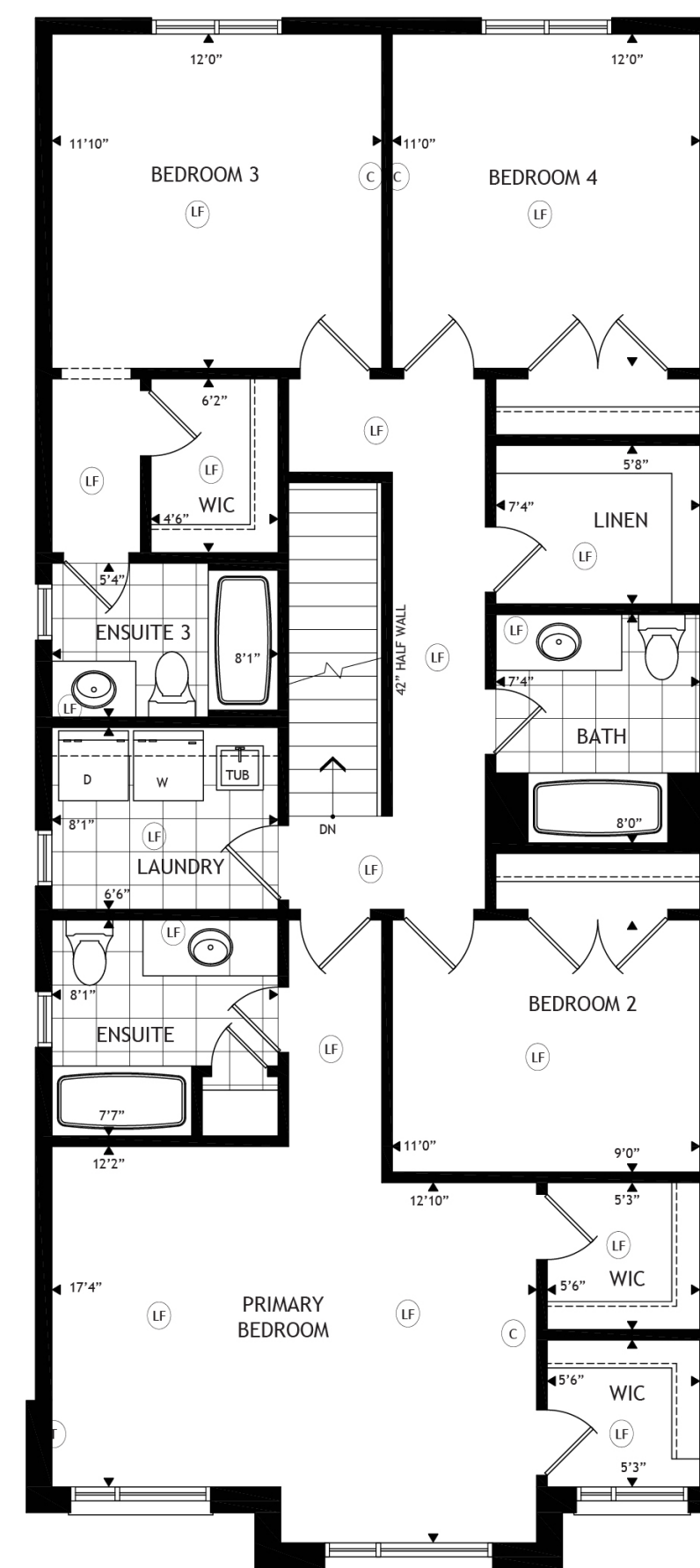
All material, specifications and floor plans are subject to change without notice. House renderings are artists' conception and may be built as a mirror image. All floor plans are approximate dimensions.

Actual usable floor space may vary from the stated floor area. Colour representations are approximate and subject to change. Municipal Architectural Controls may require modification to exterior material used, exterior house design, appearance and colours.

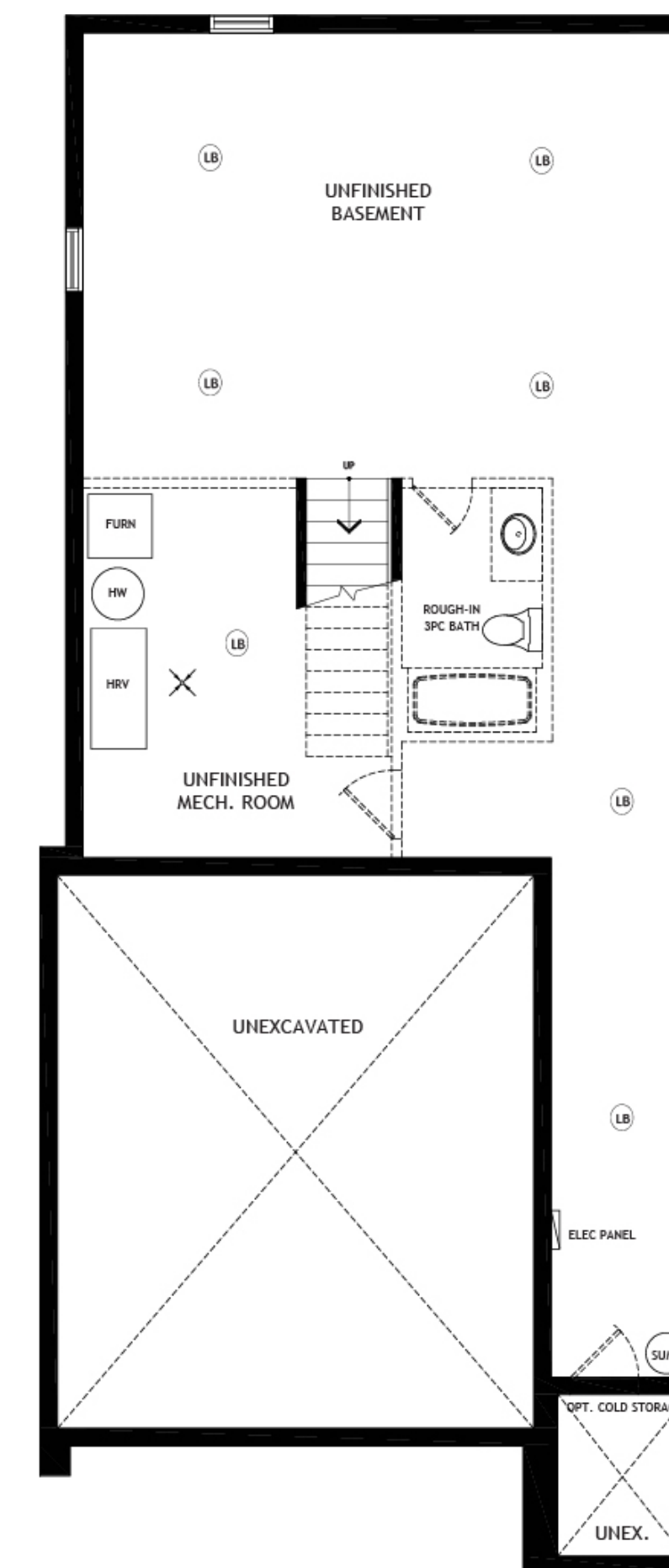
Legend	
(LB)	Light Bulb
(LF)	Light Fixture
(CL)	Coach Light
(T)	Telephone
(C)	Cable



Main Floor



Second Floor



Basement



# YOUR DREAM HOME IS WAITING

Connect with a sales consultant to schedule a visit or find out more about how we can help.



## Contact Us

### SALES OFFICE + MODELS

15 Lally Terrace  
Barrie, Ontario

[sales@bradleyhomes.ca](mailto:sales@bradleyhomes.ca)

1-866-404-6142

### HEAD OFFICE + DESIGN STUDIO

111 Bradford Street,  
Barrie, ON L4N 3A9

[designstudio@bradleyhomes.ca](mailto:designstudio@bradleyhomes.ca)

