

DUPLEX 2 STOREY

34' LOT | DETACHED



MOVE-IN-READY

Lot #85, 26 Barnyard Trail

\$1,155,000

SUGARBUSH

PRIMARY



4 Beds



3 ½ Baths



2,417 sq ft



2 garages

SECONDARY



1 Beds



1 Baths



746 sq ft



2 laundry

OVERVIEW

Scenic Hewitt's Gate featuring family friendly amenities including a new high school, south end shopping centers, walking trails, natural forests, water features and close proximity to beaches. It is also minutes to the Allandale Go Station, Highway 11, and Highway 400, providing ease of commuting south to the city or north to cottage country.

Upgrades

Included:

- Lookout lot
- Full Brick
- Nine Foot ceilings second floor
- Extra receptacle
- Interior pot light with white trim
- Waterline to fridge
- Hardwood to be installed in kitchen
- Colour upgrade has been completed.



Sugarbush | 34' Lot FLOORPLANS

All locations are to be approximate and may be impacted by joist locations, HVAC, plumbing etc. The builder has the right to move locations slightly in order to accommodate house design.

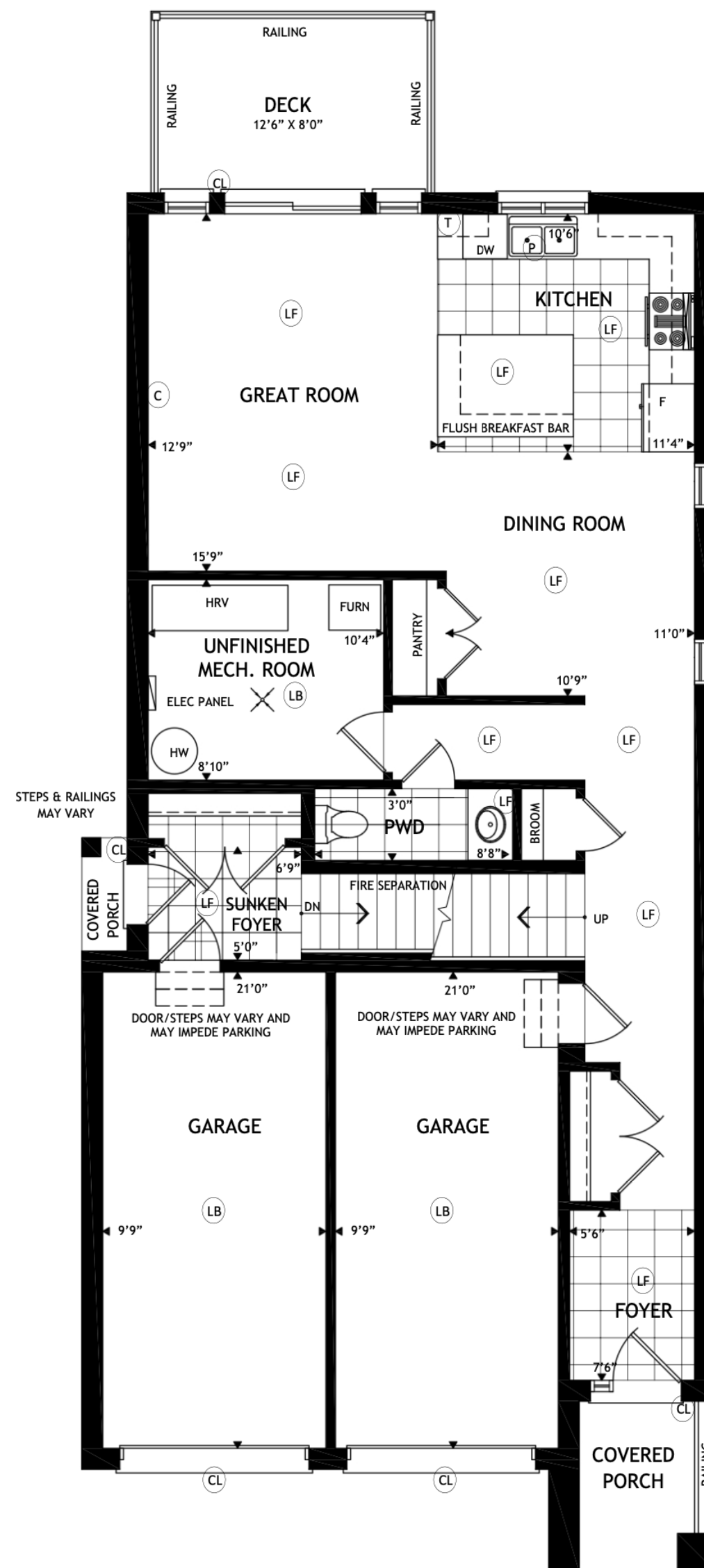
Ontario Building code supersedes anything on this drawing.

All material, specifications and floor plans are subject to change without notice. House renderings are artists' conception and may be built as a mirror image. All floor plans are approximate dimensions.

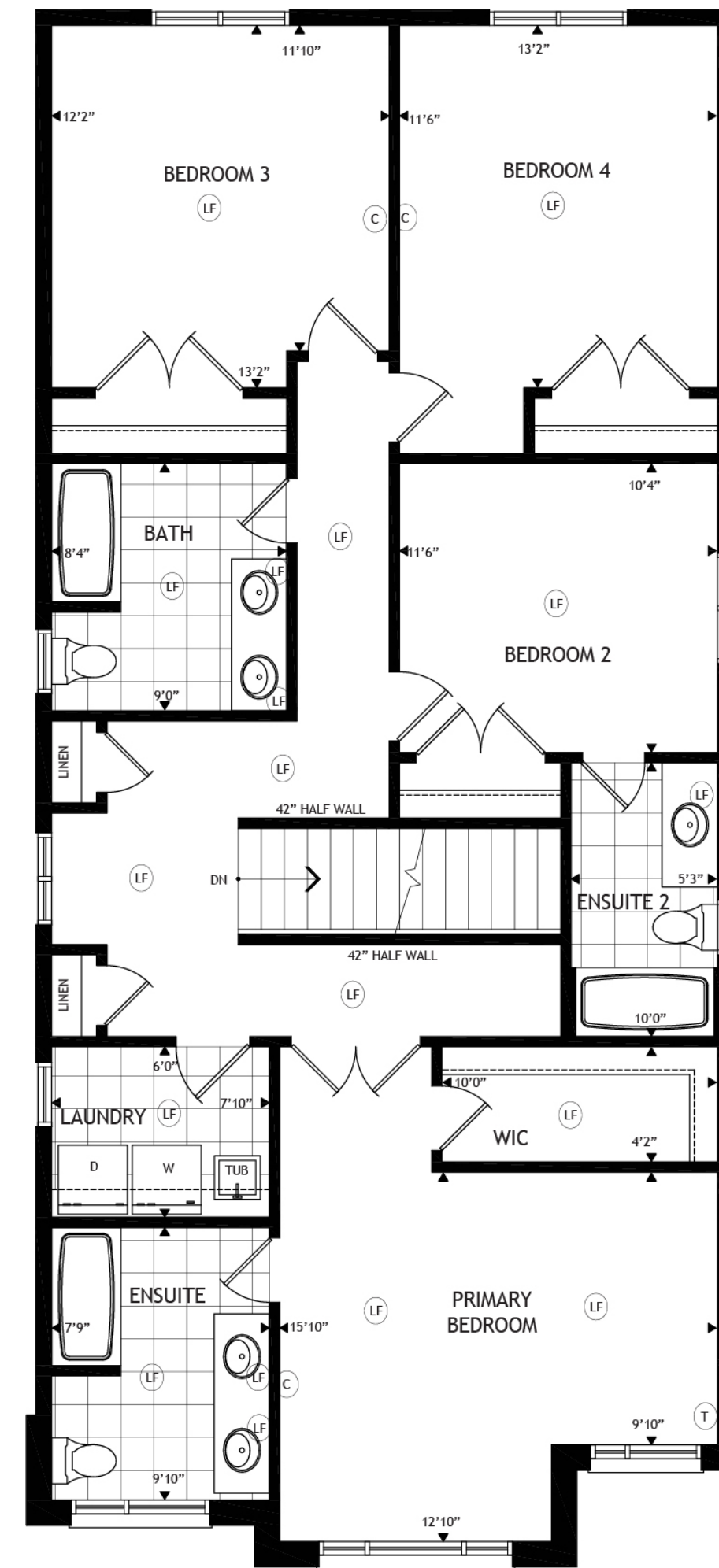
Actual usable floor space may vary from the stated floor area. Colour representations are approximate and subject to change. Municipal Architectural Controls may require modification to exterior material used, exterior house design, appearance and colours.

Legend

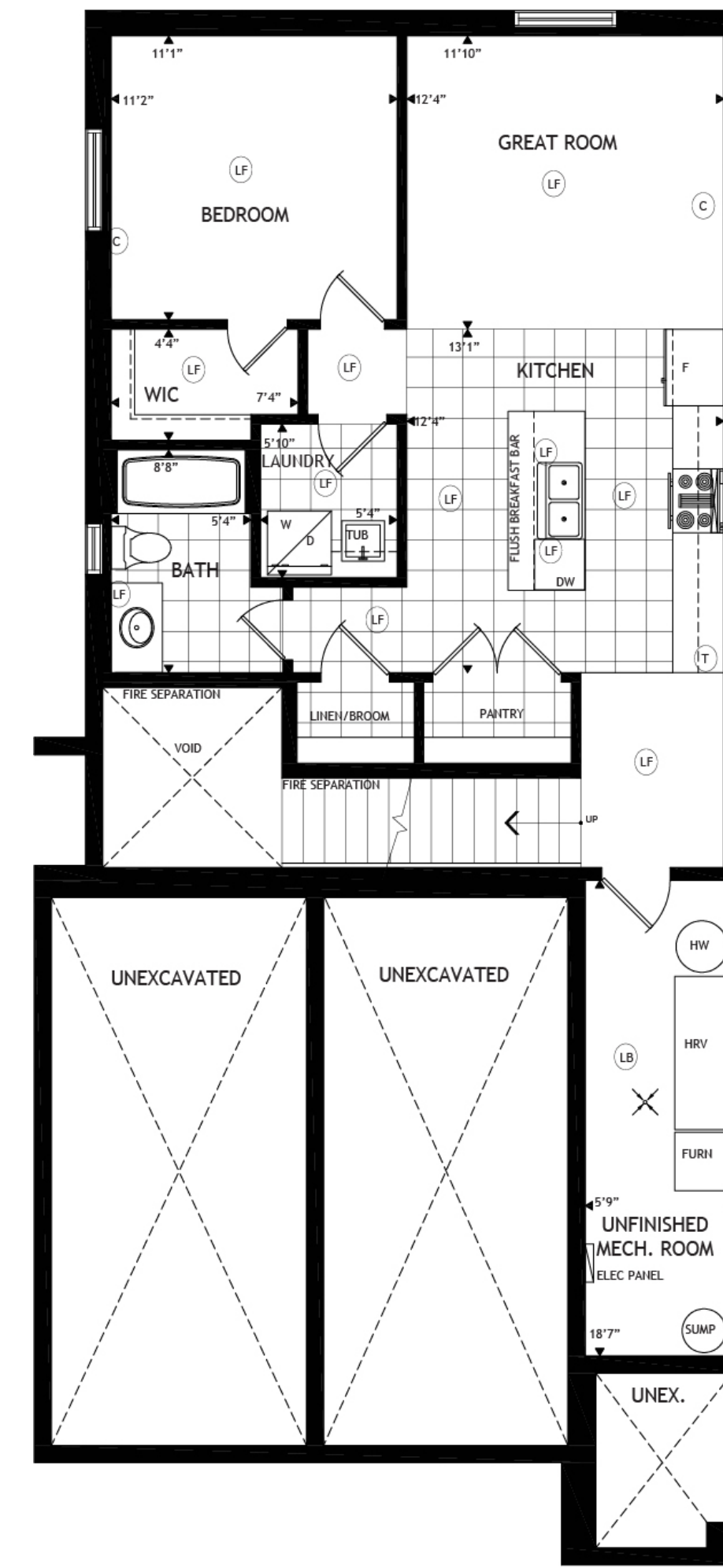
- (LB) Light Bulb
- (LF) Light Fixture
- (CL) Coach Light
- (T) Telephone
- (C) Cable



Primary Suite Main Floor



Primary Suite Second Floor



Secondary Suite

YOUR DREAM HOME IS WAITING

Connect with a sales consultant to schedule a visit or find out more about how we can help.



Contact Us

SALES OFFICE + MODELS

15 Lally Terrace
Barrie, Ontario

sales@bradleyhomes.ca

1-866-404-6142

HEAD OFFICE + DESIGN STUDIO

111 Bradford Street,
Barrie, ON L4N 3A9

designstudio@bradleyhomes.ca

